



Autumn Series

Sat 12th Sept to Sun 25th Oct 2009

Carrickfergus Sailing Club

Sailing Instructions



1. Rules

- 1.1. The regatta will be governed by the rules as defined in *The Racing Rules of Sailing*.
1.2. Flying Fifteen class rules; Laser SB3 class rules; RS Elite class rules; IRC Rules, Parts 1, 2 and 3; and RYA Portsmouth Yardstick Scheme shall apply.

2. Notices to Competitors

- 2.1. Notices to competitors will be posted on the official notice board(s) located in the foyer of the clubhouse.

3. Changes to Sailing Instructions

- 3.1. Any change to the sailing instructions will be posted before 0900 on the day it will take effect, except that any change to the schedule of races will be posted by 2000 on the day before it will take effect.

4. Signals Made Ashore

- 4.1. Signals made ashore will be displayed at the club battery.

5. Schedule of Races

- 5.1. Dates of racing:

Topper, PY Dinghy - Sat 12th September to Sat 24th October 2009

IRC, PY, Restricted Sail, Flying 15, Sportsboat - Sun 13th September to Sun 25th October 2009

- 5.2. Number of races:

Class	Number	Races per day
IRC, PY, Restricted Sail, Topper, PY Dinghy	7	1
Flying 15, Sportsboat	14	2

- 5.3. If the Race Committee decide to sail an extra race on any day Flag K will be displayed at the Finishing Line of the last scheduled race. This only applies to the Topper, PY Dinghy, Flying 15, Sportsboat classes.

- 5.4. The scheduled time of the warning signal for the first race each day is:

Flying 15, Sportsboat – 10:25

Topper, PY Dinghy – 11:00

IRC, PY, Restricted Sail – 13:25

- 5.5. On the last day of the regatta no warning signal will be made after 15:30.

6. Class Flags

- 6.1. Class flags will be:

Class	Flag
IRC	Numeral pennant 1
PY Cruiser	Numeral pennant 5
Restricted Sail	Flag A
Classic Flying 15	Flag C
Sportsboat	Numeral pennant 3
Topper	Flag T
PY Dinghy	Flag F

- 6.2. Each boat in IRC, PY Cruiser and Cruiser Restricted Sail classes shall conspicuously display

the flag appropriate to its class, as described above, from or near the backstay (or starboard shroud if no backstay) at the start and finish of each race.

7. Racing Areas

7.1. The Racing Area will be on Belfast Lough to the south of Carrickfergus Sailing Club.

8. Dinghy Races – Topper and PY Dinghy

8.1. The Courses

8.1.1. The course will be posted ashore before boats are launched.

8.2. Marks

8.2.1. Marks will be Red Spherical marks unless described as otherwise when the course is posted..

8.3. The Start

8.3.1. The starting line will be between a staff displaying a blue flag on the Committee Vessel and the starting mark.

8.3.2. Boats whose warning signal has not been made shall avoid the starting area during the starting sequence for other races.

8.3.3. A boat starting later than 4 minutes after her starting signal will be scored Did Not Start without a hearing. This changes rules A4 and A5.

8.4. Change of the Next Leg of the Course

8.4.1. To change the next leg of the course, the race committee will move the original mark

8.5. The Finish

8.5.1. The finishing line will be between a staff displaying a blue flag on the Committee Vessel and the finishing mark.

8.6. Time Limits

8.6.1. The time limit will be 60 minutes:

8.6.2. Boats failing to finish within 20 minutes after the first boat in their class sails the course and finishes will be scored Did Not Finish without a hearing. This changes rules 35, A4 and A5.

9. Morning Races – Classic Flying 15, Sportsboat

9.1. The Courses

9.1.1. The diagram to the right shows the course, including the approximate angles between legs, the order in which marks are to be passed, and the side on which each mark is to be left.

9.2. Marks

9.2.1. Marks 1 and 2 will be Red Spherical marks.

9.3. The Start

9.3.1. The starting line will be between a staff displaying a blue flag on the Committee Vessel and the starting mark.

9.3.2. Boats whose warning signal has not been made shall avoid the starting area during the starting sequence for other races.

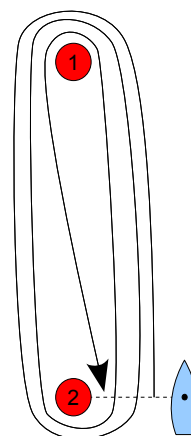
9.3.3. A boat starting later than 4 minutes after her starting signal will be scored Did Not Start without a hearing. This changes rules A4 and A5.

9.4. Change of the Next Leg of the Course

9.4.1. To change the next leg of the course, the race committee will move the original mark

9.5. The Finish

9.5.1. The finishing line will be between a staff displaying a blue flag on the Committee Vessel and the finishing mark.



9.6. Time Limits

9.6.1. The time limit will be 60 minutes:

9.6.2. Boats failing to finish within 20 minutes after the first boat in their class sails the course and finishes will be scored Did Not Finish without a hearing. This changes rules 35, A4 and A5.

10. Afternoon Races – IRC, PY Cruiser, Restricted Sail

10.1. The Courses

10.1.1. The diagrams in Attachment A show the approximate positions of all the marks. The table in Attachment B shows the courses, including the course signals, the order in which marks are to be passed and the side on which each mark is to be left.

10.1.2. No later than the warning signal, the race committee signal boat will display the course board above the class designation mounted on the Club Battery indicating the course to be sailed.

10.1.3. Course direction will be indicated by a red or green board located under the class flags. A red board indicates starting East to West and leaving all marks to port. A green board indicates starting West to East and leaving all marks to starboard.

10.1.4. On completion of a round of a course, boats shall continue on a further round if the course letter is still displayed above their class designation. If the course letter has changed, boats shall complete a round of the new course displayed above their class designation.

10.1.5. When the letter 'F' is displayed above a class designation, that class shall finish.

10.2. Marks

10.2.1. Marks will be as follows:

R	Red Outer Limit of start line.	G	Green Outer Limit of start line
1	Round yellow N 54:42.562 W 005:47.517	A	Round yellow N 54:42.425 W 005:46.621
2	Round yellow N 54:41.945 W 005:47.129	B	Round yellow N 54:41.623 W 005:49.756
3	Round yellow N 54:41.506 W 005:48.751	C	Round yellow N 54:40.400 W 005:46.470
4	Round yellow N 54:42.163 W 005:49.296	D	Round yellow N 54:41.676 W 005:47.994

10.3. The Start

10.3.1. Races will be started by using rule 26, modified to start in fleets rather than classes, with the warning signal given 5 minutes before the starting signal.

10.3.2. Fleets will be comprised as follows:

Fleet	Classes	Fleet Flag
A	IRC, PY Cruiser & Restricted Sail	Numeral pennant 1

10.3.3. **Note:** Competitors should be aware that although the individual classes have amalgamated into fleets for the start they will use course designations corresponding to their class, as described in SI 6.1.

10.3.4. The start line is formed between the orange pole at the front of the battery and a green limit mark (G) if the first mark is to be rounded to starboard, or a red limit mark (R) if the first mark is to be rounded to port.

10.3.5. An orange inner limit mark will be laid approximately on the start line. When starting boats shall not pass between the inner limit and the shore.

10.3.6. Boats whose warning signal has not been made shall avoid the starting area during the starting sequence for other races.

10.3.7. A boat starting later than 5 minutes after her starting signal will be scored Did Not Start without a hearing. This changes rules A4 and A5.

10.3.8. The race committee will attempt to broadcast sail numbers of boats that must comply with rule 29.1 or rule 30.1 on VHF Channel 37. Failure to make a broadcast or to time it accurately will not be grounds for a request for redress. This changes rule 62.1(a).

10.3.9. A boat which has not reached the vicinity of the Starting Line when its preparatory signal is

made may proceed under power until it nears the Starting Line, when the engine shall be stopped and the boat shall then take a Two-Turns Penalty before crossing the line to start.

10.4. The Finish

10.4.1. The finishing line will be formed between the orange pole at the battery and the red limit mark (R) if the previous mark was left to starboard, or the green limit mark (G) if the previous mark was left to port.

10.4.2. An orange inner limit mark will be laid approximately on the start line. When finishing boats shall not pass between the inner limit and the shore.

10.5. Time Limits

10.5.1. The time limit will be 2 hours from the starting signal for each class.

10.5.2. Boats failing to finish within 45 minutes (60 minutes for Restricted Sail Class) after the first boat in each class sails the course and finishes will be scored Did Not Finish. This changes rules 35, A4 and A5.

10.5.3. In the event of a second or subsequent round being designated, should no boat finish that round within the time limit for their class, or should the race be abandoned, the time of boats taken at the end of the last round completed shall be used for the result of the race. Boats not racing at the time limit or the time of abandonment will be recorded as Did Not Finish. This changes rule 35, A4 and A5.

11. Protests and Requests for Redress

11.1. Protest forms are available at the race office. Protests and requests for redress or reopening shall be delivered there within the appropriate time limit.

11.2. For each class, the protest time limit is 90 minutes after the last boat has finished the last race of the day.

11.3. Notices will be posted no later than 30 minutes after the protest time limit to inform competitors of hearings in which they are parties or named as witnesses. Hearings will be held in the protest room, located at the Race Office, beginning at the time posted.

11.4. Notices of protests by the race committee or protest committee will be posted to inform boats under rule 61.1(b).

11.5. Breaches of instructions 9.3.2. 10.3.6. , 13. will not be grounds for a protest by a boat. This changes rule 60.1(a). Penalties for these breaches may be less than disqualification if the protest committee so decides. The scoring abbreviation for a discretionary penalty imposed under this instruction will be DPI.

11.6. On the last scheduled day of racing a request for reopening a hearing shall be delivered (a) within the protest time limit if the requesting party was informed of the decision on the previous day;

(b) no later than 30 minutes after the requesting party was informed of the decision on that day. This changes rule 66.

11.7. On the last scheduled day of racing a request for redress based on a protest committee decision shall be delivered no later than 30 minutes after the decision was posted. This changes rule 62.2.

12. Scoring

12.1. Club PY Handicaps will be used for scoring in PY classes.

12.2. Three races are required to be completed to constitute a series.

(a) When fewer than four races have been completed, a boat's series score will be the total of her race scores.

(b) When from four to seven races have been completed, a boat's series score will be the total of her race scores excluding her worst score.

(c) When eight or more races have been completed, a boat's series score will be the total of her race scores excluding her two worst scores.

13. Safety Regulations

13.1. A boat that retires from a race shall notify the race committee as soon as possible.

13.2. Boats shall not race with an anchor on the bow. Boats infringing this instruction shall be disqualified without a hearing. This amends RRS 63.1

13.3. Rule 40 will apply at all times while afloat. Flag Y will not be displayed and no sound signal will be made. This changes rule 40.

14. Prizes

14.1. Prizes will be given as follows: 1st place 3 or more entries, 2nd place 4 or more entries, 3rd place 5 or more entries.

15. Disclaimer of Liability and Insurance

15.1. A boat is entirely responsible for her own safety, whether afloat or ashore, and nothing, whether in the Notice of Race or Sailing Instructions or anywhere else, reduces this responsibility.

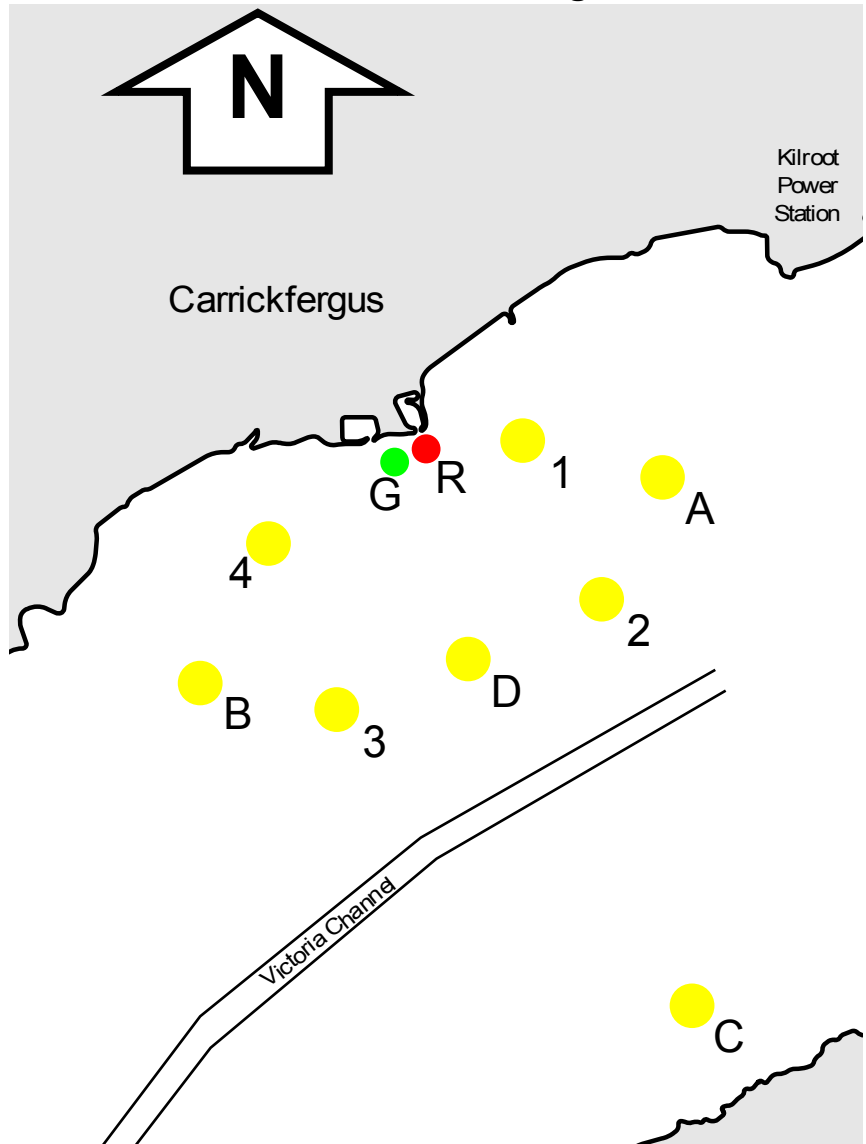
15.2. It is for the boat to decide whether she is fit to sail in the conditions in which she will find herself. By launching or going to sea, the boat confirms that she is fit for those conditions and her crew is competent to sail and compete in them.

15.3. The boat is required to hold adequate insurance and in particular to hold insurance against third party claims in the sum of at least £2m sterling.

15.4. Nothing done by the organisers can reduce the responsibility of the boat nor will it make the organisers responsible for any loss, damage, death or personal injury, however it may have occurred, as a result of the boat taking part in racing. The organisers encompass everyone helping to run the race and the event, and include the organising authority, the race committee, the race officer, patrol boats and beach masters.

15.5. The provision of patrol boats does not relieve the boat of her responsibilities.

Attachment A - Racing Area



Attachment B - Course List

Course Letter	Green board					Course Letter	Red board						
	Starting West to East						Starting East to West						
	Leave marks to starboard						Leave marks to port						
A	1	2	4	G	R	A	4	3	1	R	G		
B	1	D	4	G	R	B	4	D	1	R	G		
C	1	3	4	G	R	C	4	2	1	R	G		
D	1	2	G	R		D	4	3	R	G			
E	1	D	G	R		E	4	D	R	G			
G	1	3	G	R		G	4	2	R	G			
H	1	B	G	R		H	4	A	R	G			
I	1	4	G	R		I	4	1	R	G			
J	1	C	4	G	R	J	4	C	1	R	G		
K	1	C	B	G	R	K	4	C	A	R	G		
L	1	2	3	G	R	L	4	3	2	R	G		
M	1	G	R			M	4	R	G				
N	1	2	3	4	G	R	N	4	3	2	1	R	G
P	A	C	B	G	R	P	B	C	A	R	G		
R	A	B	G	R		R	B	A	R	G			
S	A	3	4	G	R	S	B	2	1	R	G		
T	A	D	B	G	R	T	B	D	A	R	G		
U	A	G	R			U	B	R	G				
V	2	3	4	G	R	V	3	2	1	R	G		
W	2	B	G	R		W	3	A	R	G			
X	2	4	G	R		X	3	1	R	G			
Y	2	G	R			Y	3	R	G				
Z	D	G	R			Z	D	R	G				