

J/24 Northern Championship

Carrickfergus Sailing Club

18/19 September 2021

Sailing Instructions

The notation '[NP]' in a rule of the sailing instructions (SIs) means that a boat may not protest another boat for breaking that rule. This changes RRS 60.1(a)

1. Rules

- 1.1. The event is governed by the rules as defined in The Racing Rules of Sailing.
- 1.2. Racing rules Race Signals AP,33, 35, 44.1, 60.1(a), 61.3, 62.1(a), 62.2, A5.1 and A5.2 will be changed. The changes appear, in full, in these sailing instructions.

2. Changes to Sailing Instructions

- 2.1. Any change to the sailing instructions will be posted before 0900 on the day it will take effect, except that any change to the schedule of races will be posted by 2000 on the day before it will take effect.

3. Communications with Competitors

- 3.1. Notices to competitors will be posted on the official notice board located at the front of the club.
- 3.2. The race office is located downstairs in Carrickfergus Sailing Club, email sailing@carrickfergussc.org.
- 3.3. On the water, the race committee may monitor and communicate with competitors on VHF radio channel 37.

4. Code of Conduct

- 4.1. [DP] Competitors and support persons shall comply with reasonable requests from race officials.

5. Signals made ashore

- 5.1. Signals made ashore will be displayed at the Starting Battery.
- 5.2. When flag AP is displayed ashore, '1 minute' is replaced with 'not less than 45 minutes' in Race Signals AP. This changes race signals AP.

6. Schedule of Races

- 6.1. Saturday: Races 1 to 3
Sunday: Races 4 to 6
- 6.2. Race 4 may be run on the Saturday at the discretion of the Race Committee. To indicate this intention, the finish boat will display flag Numeral 4 at the end of Race 3.
- 6.3. The scheduled time of the first warning signal of the first race on Saturday is 1130.
The scheduled time of the first warning signal of the first race on Sunday is 1030.

7. Class flags

- 7.1. The class flag will be code flag J.

8. Racing Area

- 8.1. See NoR 8.

9. Courses

- 9.1. The diagram and table in SI Addendum A show the course(s), the order in which marks are to be passed, and the side on which each mark is to be left.
- 9.2. No later than the warning signal, the RC will signal the number of rounds to be sailed. Numeral Pennant 2 signifies 2 rounds and Numeral Pennant 3 signifies 3 rounds.
- 9.3. No later than the warning signal, the race committee signal vessel may display the approximate compass bearing of the first leg.

10. Marks

- 10.1. Marks are Red Spherical buoys.
- 10.2. The Start Mark will be a Green buoy.
- 10.3. The Finish Mark will be a Red Buoy.

11. The Start

- 11.1. The starting line is between a staff displaying an orange flag on the signal vessel at the starboard end and the course side of the port-end starting mark.
- 11.2. If any part of a boat's hull is on the course side of the starting line during the two minutes before her starting signal and she is identified, the race committee will attempt to broadcast her sail number on VHF channel 37. Failure to make a broadcast or to time it accurately will not be grounds for a request for redress. This changes RRS 62.1(a).
- 11.3. If any part of a boat's hull is on the course side of the starting line at her starting signal and she is identified, the race committee will attempt to hail her sail number. Failure to hail her number, failure of her to hear such a hail, or the order in which boats are hailed will not be grounds for a redress for request. This changes RRS 62.1(a).
- 11.4. A boat that does not start within five minutes after her starting signal will be scored Did Not Start without a hearing. This changes RRS A5.1 and A5.2.

12. Change of the Next Leg of the Course

- 12.1. To change the next leg of the course, the race committee will move the original mark or the finishing line to a new position.
- 12.2. Minor course changes may not be signalled. This changes RRS 33.

13. The Finish

- 13.1. The finishing line is between a staff displaying a blue flag on the finishing mark at the starboard end and the course side of the port end finishing mark.

14. Shortening Course

- 14.1. In addition to RRS 32, if a Race Committee Vessel displaying code flag F, making repeated sound signals, is positioned adjacent to a mark of the course, boats, having rounded that mark, shall proceed directly to the Finish line to finish.

15. Penalty System

- 15.1. RRS 44.1 is changed so that the Two-Turns Penalty is replaced by the One-Turn Penalty.
- 15.2. The Post-Race Penalty, Advisory Hearing and RYA Arbitration of the RYA Rules Disputes procedures shall apply (for information on the procedures, go to www.rya.org.uk/go/rules).

The outcome of an RYA Arbitration can be referred to a protest committee, but an arbitration cannot be reopened or appealed.

16. Time Limits

- 16.1. Boats failing to finish within a 15 minute finishing window after the first boat in her class sails the course and finishes will be scored Did Not Finish without a hearing. This changes RRS 35, A5.1 and A5.2

17. Hearing Requests

- 17.1. The protest time limit is 90 minutes after the last boat finishes the last race of the day or the race committee signals no more racing today, whichever is later. This changes RRS 61.3 and 62.2.
- 17.2. Hearing request forms are available from the race office.
- 17.3. Notices will be posted no later than 30 minutes after the protest time limit to inform competitors of hearings in which they are parties or named as witnesses. Hearings will be held in the protest room downstairs in the clubhouse.

18. Scoring

- 18.1. As per NoR 11.

19. Safety Regulations

- 19.1. [DP] [NP] A boat that retires from a race shall notify the race committee at the first reasonable opportunity.

20. Replacement of Crew or Equipment

- 20.1. [DP] [NP] Substitution of competitors is not allowed without prior written approval of the race committee.
- 20.2. [DP] [NP] Substitution of damaged or lost equipment is not allowed unless authorised by the race committee. Requests for substitution shall be made at the first reasonable opportunity.
- 20.3. Class rule C.10.2 is changed to allow a boat to carry a spare spinnaker as described in Class rule J.2.

21. Equipment and Measurement Checks

- 21.1. [NP] A boat or equipment may be inspected at any time for compliance with the class rules, notice of race and sailing instructions.

22. Trash Disposal

- 22.1. Trash may be placed aboard official or support person vessels.

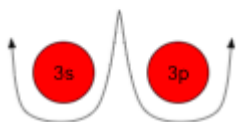
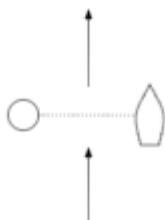
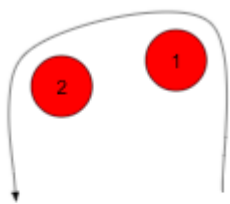
23. Prizes

- 23.1. As per NoR 15.

24. Risk Statement

- 24.1. As per NoR 13

Addendum A



2 Laps - Start - 1 - 2 - 3s/3p - 1 - 2 - 3s/3p - Finish

3 Laps - Start - 1 - 2 - 3s/3p - 1 - 2 - 3s/3p - 1 - 2 - 3s/3p - Finish